

Prospectus



Thomas Telford School



2019 - 2020

A Message from the Headmaster

Over the past decade or more, Thomas Telford School has built up a reputation for outstanding GCSE results, making it one of the most successful comprehensive Schools in the country. In 2019, 97% of our Year 11 students completed Key Stage 4 with 5 or more 9 – 4 grades, including Mathematics and English.

Further information about our GCSE achievements can be found on Page 8 of this prospectus together with details of the outstanding results in the Sixth Form. For several years now Thomas Telford School has been one of the top performing comprehensive schools in the country.

It is, therefore, not surprising that many people ask me to provide reasons why Thomas Telford School is doing so well. Of course, there are many reasons but the main ones must relate to the good order within the School where bullying is not tolerated, there are very high levels of parental participation in supporting their children and there is an atmosphere where all students feel comfortable about being successful without the fear of others ridiculing them.

Everyone involved with this School knows what is expected of them and enjoys being part of a very successful team. The staff work very hard indeed and gain much satisfaction from supporting students to succeed. It all seems worthwhile when the self esteem of our students is noticeably evident for all to see when they visit Thomas Telford School.



**HEADMASTER
SIR KEVIN SATCHWELL**

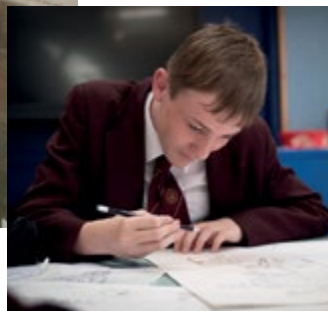
**Thomas Telford
School**

MAIN SPONSORS:

**THE MERCERS' COMPANY
OF THE CITY OF LONDON**

TARMAC GROUP LTD





Contents

Pages 4&5

A School for the 21st Century

Page 6

State of the Art Facilities and Resources

Page 7

Support Services / Safety and Security

Page 8

Examination Results

Page 9

Ofsted Report

Page 10

The Sixth Form

Page 11

Personal Development

Pages 12&13

Careers Guidance

Business and Industry Partnerships

University Programme

Pages 14&15

Sport at Thomas Telford

Pages 16&17

The Performing Arts

Page 18

Admission to the School

Page 19

How to find us



KEY STAGE 3
SCIENCE



CAD/CAM IN
TECHNOLOGY

A School for the 21st Century

Thomas Telford School is a City Technology College and is a founder member of the Specialist Schools and Academies Trust which, since the beginning of this century has played a major role in improving standards in secondary schools.

As with all CTCs and Academies, the School is sponsored. The two major sponsors are The Mercers' Company, which is the premier Livery Company in the City of London, and Tarmac Group Limited.

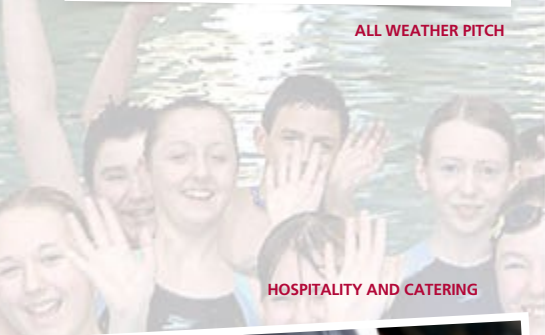
- The School is governed by an equal number of Governors nominated by each of the major sponsors together with no fewer than four additional Governors coopted by the nominated Governors. The nominated Governors must always be in the majority.
- There are sophisticated Information Technology networks, computers and multi-media facilities.
- Creative timetabling allows students to work without interruption or the need to change workplace. There are no bells to disrupt the work pattern.
- Finances are under the direct control of the Headmaster and Governors which ensures that the School addresses its priorities.
- There is an emphasis on Mathematics, Science, Technology and Business Education as well as the National Curriculum.
- Thomas Telford School has a commitment to, and a proven record of, raising standards in education.
- The broad curriculum includes Music, Dance and Drama activities which ensure that students have a balanced education.
- High standards are expected from the students and all achievements are recognised in a positive way.
- A wide range of GCSE courses is available.
- The staff of the School have developed a style of learning which embraces the imaginative use of technology coupled with proven traditional methods. This enables students to achieve greater independence and maturity.
- Students have four years to complete GCSE courses, providing more time for the completion of coursework and the opportunity to take part in extra curricular activities.
- Information Technology is used as a tool and resource for learning by every student.
- All GCSEs are now linear and completed at the end of Year 11. However, some vocational courses may have external assessments in Year 10.



- Sixth Form courses are related to the world of work and further education, including both academic and vocational qualifications.
- Close working relationships have been established with industry to ensure job readiness.
- The School remains open for Session 3 (3.05-5.05pm) offering a wide range of academic and recreational activities.
- The Session 3 programme enables students to take full advantage of the National Curriculum, spend extra time on Science, Technology and Mathematics and develop an understanding of industry and commerce.
- The extra curricular programme gives students a choice of opportunities which complement and extend their education. These range from sports and hobbies to community work and form an integral part of the timetable. Learning activities are directed towards self reliance, confidence and teamwork.
- There is individualised support for students with special requirements such as express groups for able students.
- The whole curriculum is available online for students and parents to access from home via the Internet.
- The School uses electronic communication with parents whenever possible.
- Parents work in partnership with the School to support their child's education.
- The Personal Tutorial System helps to aid personal, social and educational development of students.
- The School is committed to safeguarding and promoting the welfare of young people.
- Student performance is monitored closely and regular meetings are held to agree goals and individual action plans.
- Parents receive reports nine times per year (approximately every four weeks) and are asked on each occasion if they are satisfied with homework and the general standard of work and also if they would like an appointment with the Personal Tutor.
- Charters for students and parents set out the services that they can expect from the School as well as indicating the standards of behaviour expected of students and how parents can support their child.



ALL WEATHER PITCH



HOSPITALITY AND CATERING



State of the Art Facilities and Resources

Creating the right working conditions was the key priority for the project team of architects, governors and teachers when the School was designed and the result is a spacious and light building which captures the atmosphere of the modern office. An ongoing refurbishment programme ensures that the facilities are resourced with the most up to date equipment, so that the School can provide an environment which helps students to learn effectively.

- Large Learning Bases provide flexible teaching areas for student groups.
- Science Laboratories have been designed and equipped to provide large areas of accessible space for practical work.
- Computer systems with Internet facility are available to students.
- An advanced IT infrastructure enables all parts of the School to be linked by computer, television, radio and video.
- Whiteboard technology is available in all teaching areas where teachers and students can access a comprehensive range of engaging media.
- Independent Learning Centres use online resources to support older students' individualised learning programmes.
- The Library and Information Resource Centre can store, retrieve and distribute books, pamphlets, videos and audio programmes.
- The Technology area consists of two large workshops serviced by Computer Aided Design (CAD) and Computer Aided Manufacture (CAM).
- Two Dance Drama Studios are equipped with sprung floors and full length mirrors.
- The Theatre has tiered seating for School productions and public events.
- The music facilities include teaching areas for individual, small group and larger ensemble work complemented by a comprehensive range of musical instruments.
- Music School takes place on Tuesday, Wednesday and Thursday evenings each week between 3.05 and 6.00pm.
- Hospitality and Catering courses take place in a specially designed training kitchen with modern industrial equipment.
- A new floodlit fenced 3G synthetic grass pitch which is a superb teaching venue for football and also ensures that a full schedule of matches can take place.
- A brand new floodlit fenced Astroturf pitch, ideal for Hockey, Tennis, Netball and other sports.
- Sports field for Athletics, Rounders etc.
- A competition standard swimming pool also provides opportunities for other activities such as water polo.
- A state of the art Fitness Centre promotes wellbeing for students and staff.
- Excellent changing facilities for sport are located adjacent to the sports field.



Support Services provided by the School

Thomas Telford School provides a comprehensive support service for the benefit of all students and parents. Some of these services include:

- Transport to and from School provided for students who live in Wolverhampton.
- Assistance with expenses. Free meals for those who qualify and support with travel and School clothing.
- Restaurant where Breakfast and Lunch are available as well as vending machines dispensing hot drinks and water.
- School shop which stocks books and stationery.
- Library facilities available for students before and after School.
- Medical Room supervised by qualified First Aid Staff, with facilities for first aid.
- School reception is open between 7.45am and 6.00pm Monday to Thursday and 7.45am and 5.00pm on Fridays.
- Outstanding facilities for disabled students including a lift to all first floor areas and wheelchair access to every room.
- Thomas Telford School takes its responsibility seriously for the safeguarding of children. We work in line with current safeguarding guidance 'Keeping children safe in education' September 2018 and 'Working together to safeguard children July 2018'
The Special Needs Policy, Accessibility Plan and Equality of Opportunity Policy are amongst the many documents available via our website: www.ttsonline.net.
- Careers support and guidance for students throughout the School.
- Charter agreements between the School, parents and students which help to maximise student potential.
- The whole curriculum is available online for students and parents to access from home.



Safety and Security

The School has a closed circuit television security system supported by on-site security personnel and over 120 closed circuit cameras.

For transport purposes, coaches and mini-buses used by the School always have seat belts. Stewards are also employed to supervise the students who travel daily from Wolverhampton. Single point of entry system with a manned security gate, to closely monitor all visitors to the School.

Parental Involvement

A high standard of close working relationships with parents is central to the School's success. Parents are actively encouraged to become involved in the full life of the School in a variety of ways:

- Regular contact with Personal Tutors to discuss achievements and set targets for future progress.
- Parents work alongside teachers in School and on visits. Many share skills or expertise in a range of activities from sport to music to hearing children read.
- An Advisory Council of parents act as consultants to the Headmaster and Governors over a wide range of issues.



“Thomas Telford School continues to strive and achieve excellence in all it does.”

OFSTED JANUARY 2009

Examination Results

Our target is to exceed Local and National Averages at GCSE and A Level.

GCSE Results

For more than a decade all of our students have achieved the Government target of 5+ A*-C passes. The School has regularly been at or near the top of the performance tables for comprehensive schools in England using the benchmarks of 5+ A*-C passes including Mathematics and English and the points score which reflects the breadth of the curriculum.

5+ A*- C or grades 9-4 passes including Mathematics and English

	TTS
2018	93%
2017	95%
2016	98%
2015	96%
2014	100%

The Government now also measures the average point score of students who have achieved the EBacc or EBaccalaureate (ie. GCSEs A*-C in English, Mathematics, Science, a Modern Foreign Language and Humanities subject):

	TTS	Local Average	National Average
2018	5.65	3.99	4.04

Sixth Form Results

The School's target is to exceed the Local and National Averages and this has been achieved on a regular basis. In 2018, 34% of A Level grades were A*/A or equivalent and 43% of A Level and Vocational grades were A*/A or equivalent.

New criteria – Average points per A Level entry.

	TTS	Local Average	National Average
Points Score	37.27 (B-)	33.39 (C+)	33.33 (C+)

In broad terms this equates to an average of just under four Grade B passes per student at A Level.

Attendance Statistics

The School has a target of an overall average attendance which exceeds National and Local Averages. This target has been exceeded on a regular basis.

Attendance	TTS	Local Average	National Average
	97.4%	94.1%	94.5%

Ofsted inspected the School in January 2009. In their report, they graded the School 'Outstanding' in every category.

The full report is available on the School website: www.ttsonline.net

Some of the Inspectors comments are quoted below.

Overall Effectiveness of the School **GRADE: 1 OUTSTANDING**

- Thomas Telford School continues to strive and achieve excellence in all it does.
- The determined drive of the Headmaster for the best for every student underpins the School's success. All the staff share this vision.
- Standards achieved are the highest in England.
- The outstanding leadership of the Headmaster infuses all the School does.
- The curriculum is outstanding in its flexibility.
- The high quality provision of information and communication technology (ICT) allows students to access curriculum materials at anytime to support their learning.
- Students feel safe.
- Relationships are strong and caring.
- Very strong emphasis on healthy lifestyles.
- Outstanding care, guidance and support underpin all aspects of School life.
- Teaching and learning are outstanding.
- Parents are overwhelmingly positive about the School.

Effectiveness of the Sixth Form **GRADE: 1 OUTSTANDING**

- The effectiveness of the sixth form is outstanding.
- Students' personal development and their acquisition of skills for future economic well-being are outstanding.
- The School has strong links with other sixth form providers, universities and industry.

Achievements and standards **GRADE: 1 OUTSTANDING**

- Outstanding progress is made at Key Stages 3 and 4.
- In 2008, 99% of students gained at least ten A* to C grades, including English and mathematics. Every student also gained at least a GCSE grade C in ICT. This is much better than the national average.

Personal development and well-being **GRADE: 1 OUTSTANDING**

- Students' personal development and well-being are outstanding.
- They are proud of their achievements and are excited by others' successes.
- Attitudes to learning are excellent and behaviour is exemplary.

Teaching and learning **GRADE: 1 OUTSTANDING**

- The quality of teaching and learning are outstanding.
- Meticulous planning by individual teachers and teams ensure that teaching responds to individual students' needs.
- Very good attitudes, relationships and behaviour ensure that there is an excellent culture for learning.

Curriculum and other activities **GRADE: 1 OUTSTANDING**

- The School provides an outstanding curriculum.
- The School has successfully achieved a balance of academic and vocational pathways for students to ensure success for all.
- The extensive range of extra-curricular opportunities and high participation rates allow students to develop their personal interests and skills.

Care, guidance and support **GRADE: 1 OUTSTANDING**

- Staff are extremely committed to ensuring the very best provision for the students.
- Those students who are vulnerable and those who have learning difficulties and/or disabilities make outstanding progress.

Leadership and management **GRADE: 1 OUTSTANDING**

- The School provides a vast range of opportunities for students to take responsible and supportive roles within the School and the wider community.
- Money is spent where it will have the greatest impact on students' learning.
- Community cohesion is outstanding.
- Every element of leadership and management is outstanding.



Sixth Form at Thomas Telford School

Courses

Thomas Telford School offers a Sixth Form curriculum of considerable breadth with students studying a combination of the following courses:

Advanced General Certificate of Education (AGCE)

- Mathematics
- Further Mathematics
- Physics
- Chemistry
- Biology
- Psychology
- Business Studies
- Computer Science
- Design Technology
- Art & Design
- Music
- Physical Education
- English Language/Literature
- English Language
- English Literature
- Philosophy
- French
- German
- Spanish
- Geography
- History
- Religious Studies
- Economics
- Politics

Vocational

- Business Studies
- Applied Science
- ICT
- Performing Arts
- AAT
- Health and Social Care
- Sport

Sport and Performing Arts Academies

We also provide bespoke Sport and Performing Arts courses enabling progress to university.

Sixth Form Destinations

It is the aim of Thomas Telford School that every student should move into Higher Education or employment, preferably incorporating training, when they have completed their education at the School.

Since the School opened in 1991, an average of more than 80% of our students have chosen to follow the university pathway with the vast majority of the others securing employment.

All students receive support and practical help from the Careers Department until they have found suitable training or employment

	2016	2017	2018
Student Destination	%	%	%
University/College/First Degree/HND/Foundation (incl. Deferred University)	79%	79%	74%
Full Time Employment	21%	21%	26%

Thomas Telford School Alumni

Thomas Telford School's Alumni of former students is flourishing! The students keep in touch with each other and the School. The Association also acts as a network to enable former students to bring their experience and expertise to enrich the educational opportunities of current students.





Personal Development

Thomas Telford School provides a wide range of opportunities for each student's personal development to help prepare him/her to live a well rounded, independent life.

Sport and the Performing Arts make a valuable contribution to this development and the School offers a good choice for student participation in these areas (see pages 14 to 17).

A comprehensive careers guidance programme (see pages 12 & 13) informs and supports students throughout the School and they are encouraged to take part in a number of initiatives and competitions including the Engineering Education Scheme and the Tall Ships Adventure Challenge as well as enterprise and innovation schemes. All these projects provide invaluable experience for students, boosting their confidence and giving them an insight into the world of work.

There is a good mix of education visits, field trips and tours in this country and abroad, including exchanges with schools in Europe.

ITALY



INSET RIGHT - TALL SHIPS ADVENTURE ABOARD 'JOLIE BRISE'



NEW YORK



YEAR 7 GURDWARA VISIT



TORUS MEASUREMENT SYSTEMS PROVIDE HIGH QUALITY WORK EXPERIENCE PLACEMENTS FOR OUR STUDENTS. THIS YEAR, THEY HAVE SPONSORED ONE OF OUR BUDDING YOUNG FEMALE ENGINEERS THROUGH HER UNIVERSITY DEGREE.

Debating teams take part in local and regional competitions and many students take part in the Duke of Edinburgh Award Scheme. This is open to students from Year 10 and currently there are over one hundred students taking part at Bronze, Silver or Gold level. The Award's objective is to develop young people's personal skills and to broaden their range of experiences. There are four sections which involve learning a new skill; undertaking a service to others, for example, charity work; participating in physical recreation and undertaking a number of expeditions.



CAREERS
DISCOVERY
IN ACTION

Careers Information, Advice and Guidance

The importance of careers guidance and support is paramount for all students from Year 7 through to and including the Sixth Form.

Thomas Telford therefore employs a full time Director of Careers and a team of careers specialists to enhance career preparation and facilitate experiences with universities and employers. The aim of the department is for every student to have the right skills to enable them to plan their career during their time at the School and beyond.

The Careers Department provides a range of services which include:

- A Careers Policy which sets out student entitlements to Careers (available on the School Careers website)
- A planned programme of Careers Education which provides opportunities to develop and apply the knowledge, understanding and skills necessary to make realistic career decisions.
- A continually updated Careers website giving students and parents access to vital careers information material online - see link on School website.
- A 'drop-in' Careers Resource Centre with comprehensive and up-to-date information on opportunities in education, training and employment.
- A Careers and Activities Week Programme which provides students with an opportunity to gain and develop employability skills
- Individual impartial guidance from Schools Careers staff.
- Opportunities to experience the world of work, meet employers and learn about the skills and qualities required in the workplace.
- Access to a number of computer programmes including UCAS APPLY (for university applications) and Kudos for careers ideas.
- Support with career action planning, university applications and the preparation of effective curricula vitae.
- Assistance with interview and public speaking skills together with assessment centre preparation.





Business and Industry Partnerships



PROACTIVE PERSONNEL HAVE SUPPORTED US FOR A NUMBER OF YEARS BY HOSTING STUDENTS ON NUMEROUS WORK EXPERIENCE PLACEMENTS, ADVERTISING VACANCIES AMONGST OUR STUDENTS AND PROVIDING MOCK INTERVIEWS. THE TEAM AT PROACTIVE STRIKE THAT DELICATE BALANCE BETWEEN GIVING STUDENTS THE VALUABLE HONEST FEEDBACK THEY NEED, WHILST ALSO ENCOURAGING THEM TO STAY MOTIVATED AND AIM HIGH. THEIR CONTINUED SUPPORT FOR THE SCHOOL IS HIGHLY VALUED, PREPARING STUDENTS TO SUCCEED AT INTERVIEW AND ENTER THE WORLD OF WORK WITH CONFIDENCE.

PICTURED AT THE ACHIEVEMENT EVENING HENRIETTA GOODALL, MEMBER OF THE MERCERS COMPANY ARE KERRY MCNEE (LEFT) AND SAMMY TAYLOR-BELL (CENTRE) WHO RECEIVED THE AWARD ON BEHALF OF PROACTIVE PERSONNEL.

One of the features which distinguishes Thomas Telford School from other schools is the quality of the partnership shared with industry. Employers make a major contribution to the design, delivery and assessment of the curriculum as well as providing work placements for students.

- There is a rich diversity of contacts with over 600 organisations in Telford and Wolverhampton on our industry database.
- Local and national businesses sponsor Achievement Awards to students whose work is worthy of commendation.
- Students are regularly involved with project work for local companies.
- Support is given to students to gain regular volunteering and/or work experience to enable them to make competitive applications for university courses.
- Key local business managers work with students and teachers.
- Students undertake a Careers and Activities Week to enable them to develop employability skills.
- All Sixth Form students have the opportunity to spend up to two weeks each year, either block or part time, with employers from the private and public sectors of industry, commerce and education.

University Programme

- Promotion of residential summer schools for students in Years 10, 11 and the Sixth Form.
- Trips to university master classes and study days.
- Individual guidance from the Careers staff on course choice and back up plans.
- Visits to Higher Education fairs and university open days.
- One to one help with UCAS Personal Statements.
- Quality control of every student application to University.
- Higher Education finance information evening for students and parents.
- Oxford, Cambridge, Medicine, Dentistry and Veterinary application preparation programme for high potential students including Open Day visits, admissions test preparation and interview technique guidance.
- Access to extra financial support for University education is also available through the generous support of The Mercers' Company bursaries.
- A Careers and Higher Education Week in July to give students a head start in the University application process with presentations from and visits to Universities as well as time to complete UCAS preparation. The week also introduces students to employer-sponsored degrees, school leaver programmes and Higher Level Apprenticeships.



STAFFORDSHIRE UNIVERSITY NURSING AND MIDWIFERY VISIT



ENGINEERING EDUCATION SCHEME WINNERS FOR MAHLE FILTERS SYSTEMS LTD



Sport at Thomas Telford School

Sporting Provision

Students are offered a wide range of sports opportunities to improve their skills and engender a desire to participate in sport for the rest of their lives.

- Students are encouraged to participate in competitive sport against their peers and students from other schools.
- Students experience the wide range of social, moral and cultural benefits that sports participation provides.
- Throughout Years 7 and 8 students follow a full programme of practical activities during two 90 minute sessions each week.
- In Key Stage 4 (Years 9, 10 and 11) students follow either the GCSE Physical Education Course or the BTEC Course which involves theory as well as practical sport.
- In the Sixth Form, students can choose to follow A Level Physical Education or the BTEC National in Sport.
- A successful Football Academy in the Sixth Form incorporates the BTEC Extended Diploma in Sport as well as a comprehensive football coaching and fitness programme.
- Sixth Form students can take part in a wide range of sports for the School on Wednesday afternoons. The senior Football, Netball and Hockey teams play in local and national competitions and are very successful.

Session 3 Sport

All students can take part in the wide range of sports which are offered during Session 3 (between 3.05 and 5.10pm).

They can progress from participation and competition at House level, through School teams onto district, county, regional and national representation.

Fitness for Learning

A 70-station Fitness Centre with a specialist Spin area provides students with an opportunity to improve their fitness, using a wide range of state-of-the-art equipment for both aerobic exercise and resistance training.

The centre has fully trained instructors and the latest computer software system to support and monitor the progress of the users.

Students have the opportunity to use the equipment during Physical Education lessons and also in Session 3.

Swimming Pool

The 25 metre, six lane pool provides students with a wide range of aquatic activities. In addition to regular Physical Education sessions, during Session 3 students can take part in Water Polo and Biathlon, Swim Squad Training and Swim Fitness.

SWIMMING POOL



FITNESS SUITE

Team Honours 2018-2019

NATIONAL WINNERS

Football

Boys	Under 12	National ESFA Indoor 5-a-side Schools Cup County Round	Winners	
	Under 12	National ESFA Indoor 5-a-side Schools Cup Regional Round	Finalists	
	Under 12	SSCFA 9-a-side County Shield	Winners	
	Under 12	TWSSA 9-a-side District Cup	Winners	
	Under 13	National ESFA PlayStation Schools Cup for B Teams	Winners	
	Under 14	SSCFA County Cup	Winners	
	Under 14	National ESFA PlayStation Elite Schools Cup	Winners	
	Under 14	National ESFA PlayStation Schools Cup	Finalists	
	Under 14	SCFA County Cup	Winners	
	Under 15	National ESFA PlayStation Elite Schools Cup	Winners	
	Under 15	National ESFA PlayStation Schools Cup	Winners	
	Under 16	Premier League Elite Schools Cup	Finalists	
	Under 16	SSCFA County Cup	Winners	
	Under 18	National ESFA Schools Cup for B Teams	Finalists	
	Girls	Under 13	SSCFA County Cup	Winners
		Under 14	National ESFA PlayStation Schools Cup	Winners
		Under 14	SSCFA County Cup	Winners
		Under 15	SSCFA County Shield	Winners
Under 18		National ESFA Schools Trophy	Winners	
Under 18		BUCS Cat 1 League / Cup	Winners	

Tennis

Girls	Under 13	EGON Shropshire League Div 2	Winners
	Under 13	EGON Regional Championships	Finalists

Netball

Girls	Under 13	TWSSA Cup	Runners Up
	Under 13	JCA Condover Residential Tournament	Winners
	Under 14	JCA Condover Residential Tournament	Winners

Cross Country

Boys	All Years	TWSSAA Overall Girls Cross Country	Winners
	Under 13	ESAA Cross Country Cup Shropshire Round	Winners
	Under 13	ESAA Cross Country Cup Regional Round	Finalists
	Under 15	ESAA Cross Country Cup Shropshire Round	Winners
	Under 15	ESAA Cross Country Cup Regional Round	Finalists
Girls	All Years	TWSSAA Overall Boys Cross Country Event	Winners
	Under 13	ESAA Cross Country Cup Shropshire Round	Winners
	Under 13	ESAA Cross Country Cup Regional Round	Winners
	Under 13	ESAA Cross Country Cup National Final	Finalists
	Under 15	ESAA Cross Country Cup Shropshire Round	Winners
	Under 15	ESAA Cross Country Cup Regional Round	Winners
	Under 15	ESAA Cross Country Cup National Final	Finalists
	Y7	Shropshire Schools AA Cross Country Cup	Winners
	Junior	Shropshire Schools AA Cross Country Cup	Winners
	Inter	Shropshire Schools AA Cross Country Cup	Winners

Mixed

All Years	All Years TWSSAA Overall Combined Cross Country Event	Winners
------------------	---	---------

Hockey

Boys	Under 13	TWSSA Cup	Winners
	Under 13	Shropshire In2Hockey Cup	Winners
	Under 16	Shropshire In2Hockey Cup	Winners
Girls	Under 16	Midlands Hockey Championship	Winners
	Under 16	England Hockey Tier 3 National Cup	Runners Up
	Under 12	TWSSA Cup	Winners
	Under 13	TWSSA Cup	Winners
	Under 14	TWSSA Cup	Winners

Athletics

Boys	Under 13	ESAA Track & Field Cup Shropshire Round	Winners
	Under 13	ESAA Track & Field Cup Regional Round	Finalists
	Under 15	ESAA Track & Field Cup Shropshire Round	Winners
	Under 15	ESAA Track & Field Cup Regional Round	Finalists

Golf

Mixed	Under 18	Shropshire Schools Championships	Winners
	Under 18	ESGA National Championship	Finalists

Biathlon

Girls	Under 12	Pentathlon GB Schools National Biathlon Team Event	Winners
--------------	----------	--	---------

Basketball

Boys	Under 13	TWSSA Cup	Winners
-------------	----------	-----------	---------

Swimming

Boys	Under 18	ASA National Championships	Finalists
Girls	Under 18	ASA National Championships	Finalists

Gymnastics

Girls	Under 13	Shropshire Schools Elite Team Competition	Runners Up
--------------	----------	---	------------



U14 GIRLS NATIONAL ESFA CHAMPIONS



U13 BOYS NATIONAL ESFA CHAMPIONS



U15 ELITE BOYS NATIONAL ESFA CHAMPIONS



U14 ELITE BOYS NATIONAL ESFA CHAMPIONS



U18 GIRLS NATIONAL ESFA CHAMPIONS



U15 BOYS NATIONAL ESFA CHAMPIONS



Performing Arts

- Thomas Telford School has established and maintains a reputation for excellence in the Performing Arts.
- A range of courses are available in Key Stage 4, including GCSEs and BTEC.
- The Sixth Form also provides opportunities for a variety of courses including a specialist Performing Arts Academy.
- Every year Sixth Form students win places at prestigious dance, theatre institutes and universities to pursue their careers.



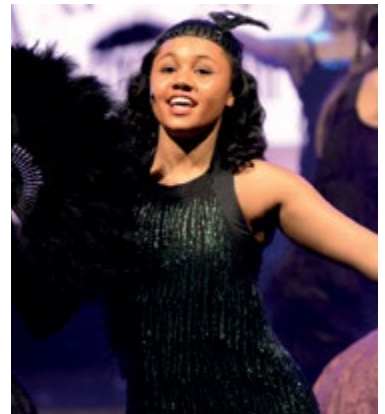
Music School

- A thriving Music School takes place during Session 3 on Monday, Tuesdays, Wednesdays and Thursdays.
- Individual instrument tuition is available covering a wide range of instruments and examinations are offered in most instruments (ABRSM, Trinity & LCM and RGT Boards).
- There are opportunities to participate in various ensembles including Rock Bands, Choir and Concert Bands.
- Two high profile concerts are held in School each year and the ensembles participate in regional and national festivals.



Drama Club

- A Drama Club runs during Session 3 for Key Stage 3 students during most terms.





Dance Academy

- A thriving Dance Academy is in place during Session 3, giving students who do not attend a formal dance school the opportunity to experience vocational dance. There are performance opportunities built into this programme.



Performance Opportunities

- There is an annual musical theatre production involving students from all age ranges.
- Christmas and Summer Concerts involve students from all ages
- Regular Arts Night performances for Sixth Form students
- Visits abroad are arranged to provide further opportunities for performance and study.



Performing Arts Students Seal of Approval

"The annual musical theatre production was a phenomenal experience and it was superb to work on such a professional show to a sell-out audience every night."

A 6.1 Performing Arts Academy Student

"The Performing Arts training fully prepares you for a professional career in the industry. We are part of a team that enthuses young talents and allows them to gain great skills. It is a great experience and learning curve for those wanting to take Performing Arts further in the future."

A 6.1 Performing Arts Academy Student

"The Music Department offers a vast range of performance opportunities for students of all ages and abilities"

A 6.2 Music Student



PRIZE WINNING STUDENTS AT THE Y11 ACHIEVEMENT EVENING WITH GUEST OF HONOUR, MR KEITH JACKSON, OUR LONGEST EVER SERVING CHAIRMAN OF GOVERNORS'

Admission to the School

Applications are invited from students of all abilities including those with special needs and/or disabilities.

Learning is organised so that all students can benefit from the individual approach.

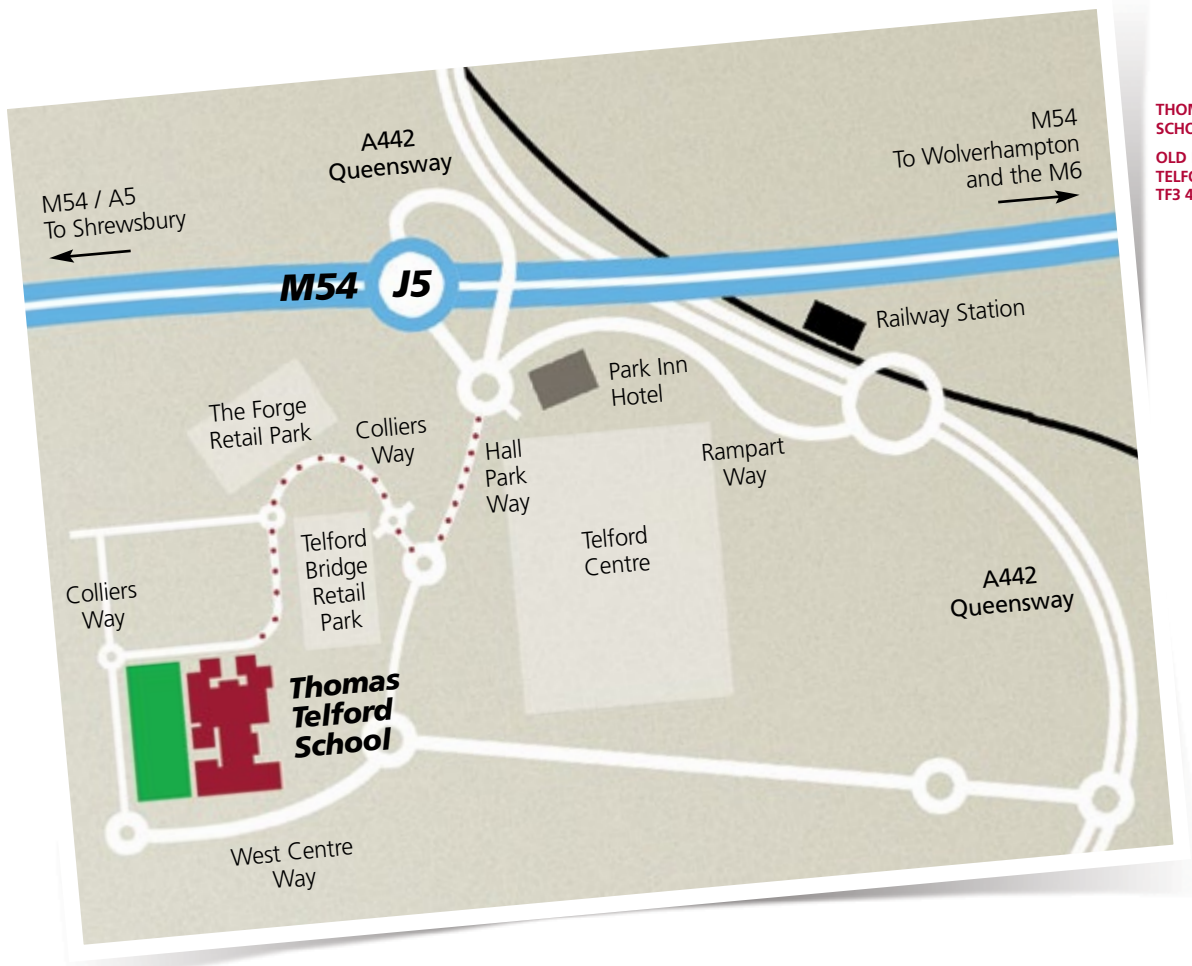
If you live within the Telford Town boundary or in the City of Wolverhampton or outside the City but in postcodes WV6, WV8 and WV9, your child may be eligible for a place in Year 7 or the Sixth Form.



HENRIETTA GOODALL, A MEMBER OF THE MERCERS' COMPANY WITH SOME OF THE PRIZE WINNING STUDENTS AT ACHIEVEMENT EVENING 2019

- The School offers the full National Curriculum and wide ranges of GCSEs and Advanced Levels, although students with a marked interest in or aptitude for Science, Technology and Mathematics are particularly suited for a place at Thomas Telford School.
- Free education is provided for all students. The School is funded directly by the Government.
- Transport is provided for students who live in Wolverhampton.
- Families in receipt of income support receive assistance with school meals, clothing and transport.
- Support with the admissions process is available for students with special needs and/or disabilities.

Please see admissions contact details on the back cover of this prospectus.



THOMAS TELFORD
SCHOOL
OLD PARK
TELFORD
TF3 4NW

How to find us..

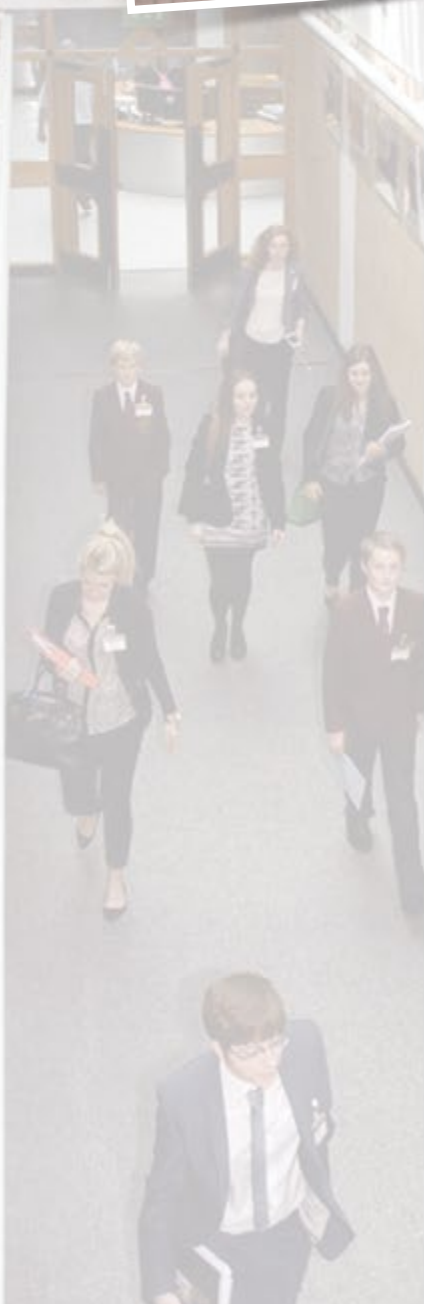
Travelling from the North

Follow the M6 south and exit at Junction 12.
Follow the A5 west for approximately 1 mile. At the first roundabout take the first exit and follow the A449 south for approximately 5 miles and join the M54 westbound. Stay on the M54 for about 15 miles and exit at Junction 5.

Travelling from the South

Follow the M6 north and join the M54 at Junction 10A. Stay on the M54 for about 15 miles and exit at Junction 5.

The School is located close to the M54 and Telford Central Railway Station is a short taxi ride or a 15 minute walk away.



Thomas Telford School

For Admissions details please contact:

Admissions Department

Thomas Telford School
Old Park, Telford, Shropshire TF3 4NW

Tel: 01952 200000
Fax: 01952 293294

Web: www.ttsonline.net
Email: admissions@ttsonline.net